

PRIMAVERA RISK ANALYSIS

# Primavera Risk Analysis v8.7

---

## Installation Manual

**Primavera Risk Analysis Development**

**v1.10 - Aug 2012**

This document will provide the necessary information for you to install Primavera Risk Analysis (previously known as Primavera PERTMASTER) into your Windows environment.

## Table of Contents

Table of Contents.....	2
IMPORTANT INFORMATION.....	3
Introduction.....	3
Hardware Requirements.....	3
Software Requirements.....	3
Silent Installation.....	3
Standalone Install.....	4
Additional Software.....	6

## **IMPORTANT INFORMATION**

As part of the streamlining of version 8.7 of Primavera Risk Analysis, Visual Basic (VBA) has been removed. The following areas will be affected by this change:

- It will no longer be possible to create VBA macro .plan files.
- The Microsoft Visual Basic editor will no longer be installed with the software.
- When opening .plan files containing existing macros, saving the .plan file will remove the existing macro functionality.

Although the ability to create and run macros from within Primavera Risk Analysis is no longer available, the ability to extend and control Primavera Risk Analysis through programmable components still exists.

The underlying object model which could previously be controlled using Macros programmed with Microsoft Visual Basic for Applications can now be controlled using any COM compliant language including Microsoft Visual Basic or Microsoft Visual C++.

The Primavera Risk Analysis Help file installed with the software also has a section on converting Macros from VBA to VB6.

## **Introduction**

Primavera Risk Analysis is a standalone MSI desktop installation.

Administrators can perform a 'silent' installation. See the relevant section below for details.

## **Hardware Requirements**

- 300 MHz CPU
- 512 MB RAM
- 120 MB of hard disk space

## **Software Requirements**

- Windows XP or Windows Vista
- Internet Explorer 6 or above

## **Silent Installation**

Risk Analysis can be installed 'silently':-

1. Create a temporary folder on your desktop and extract the contents of the installation zip file you have downloaded.

2. Open a text editor such as 'Notepad' and use this to edit the 'silentinstalltemplate.bat' batch file which defines how your Silent installation will function.

- a. Line 13 defines the location to install to. E.g. To install to the default directory of 'C:\Program Files\Oracle\Primavera Risk Analysis' you would use:-

```
if "%strInstallPath%"==" " (set strInstallPath="C:\Program Files\Oracle\Primavera Risk Analysis")
```

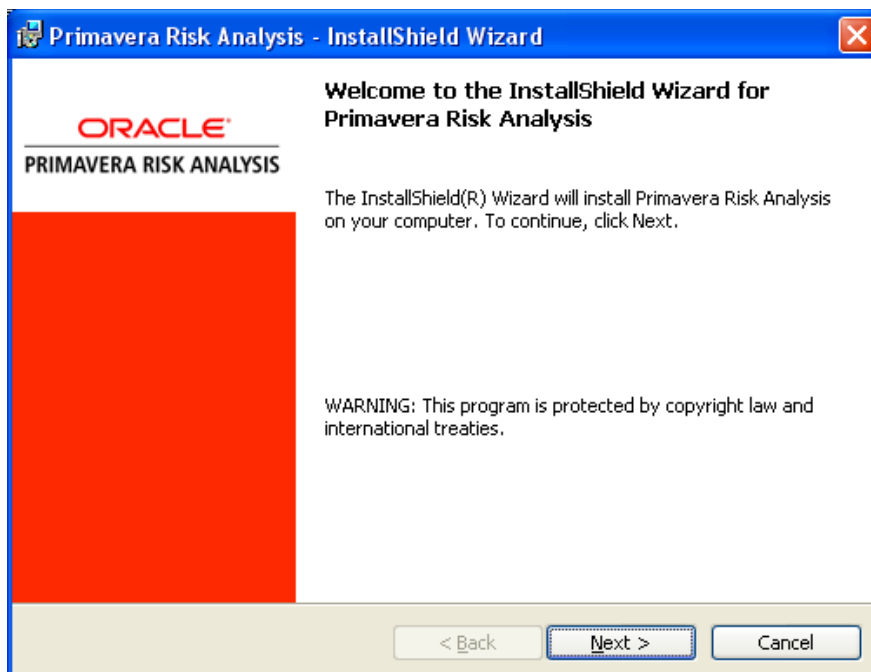
- b. Line 14 automatically fills-out the "Company" information that is requested during a manual installation. For example:-

```
if "%strCompanyName%"==" " (set strCompanyName="Oracle")
```

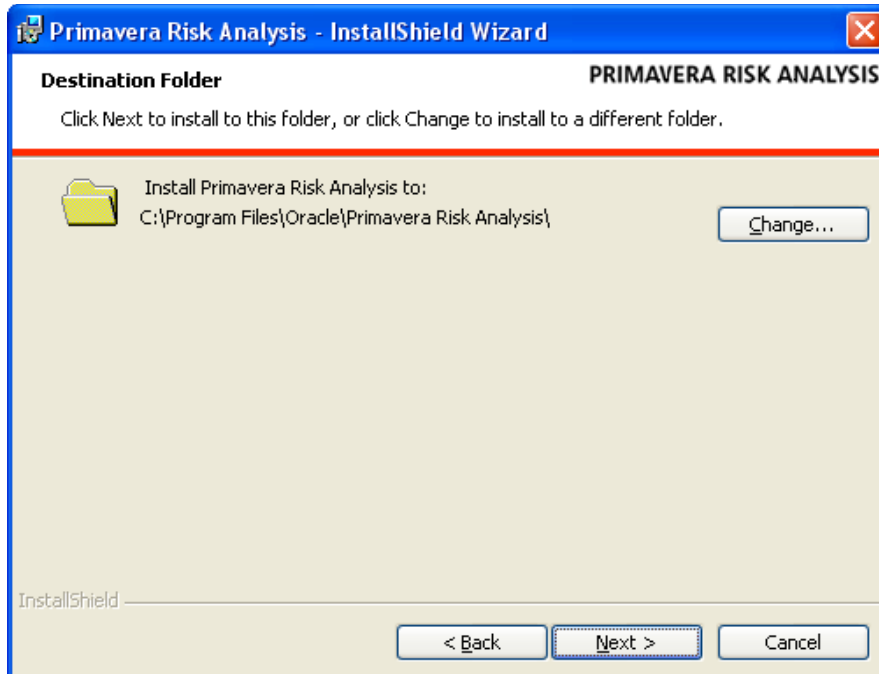
3. Save the file as type 'Text Documents (\*.txt)' and Close it when you are happy with your changes.
4. Run the batch file by double-clicking on it. This will install Risk Analysis with all the settings you defined previously in 'silentinstalltemplate.bat'.

### Standalone Install

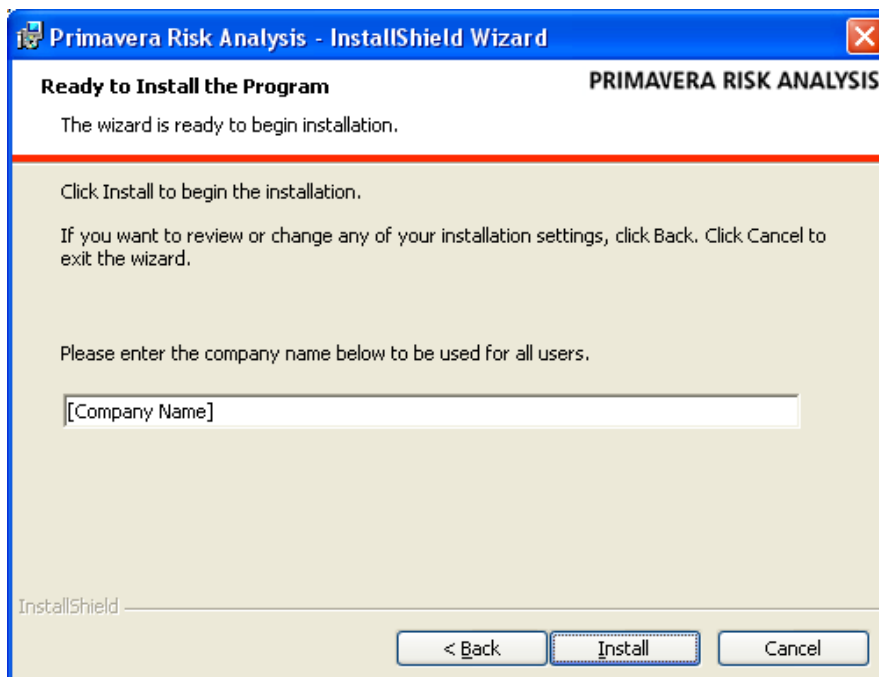
1. Double click on the downloaded installation file. This is a zip file that requires you to extract the necessary files for your installation to a temporary directory. Once the files have been unzipped you will need to run the 'Setup.exe' to start the installation.



2. **NOTE:** It is also possible to perform a 'Silent' installation of Risk Analysis by editing and running the 'silentinstalltemplate.bat' file.
3. Click *Next* and then choose the directory you would like to install Risk Analysis into.

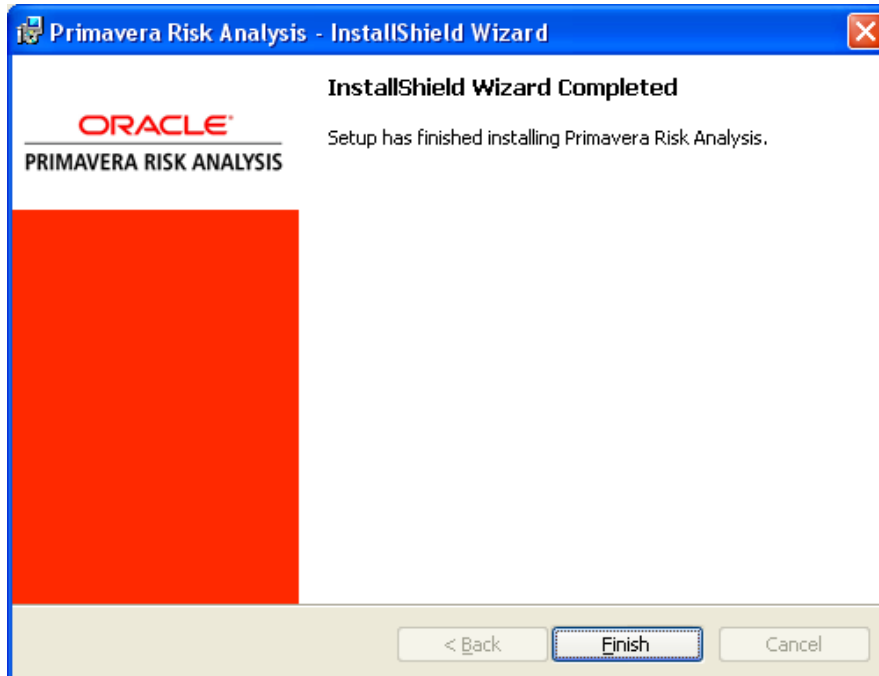


4. After clicking *Next* you will then be prompted for your company name. (Primavera Risk Analysis will prompt you the next time it is used if this is left blank)



Click *Install*.

5. When the installer has finished copying the files across, you will then be presented with the below finish screen.



6. Click *Finish* to complete the installation.
7. To start Risk Analysis, double-click on the 'Primavera Risk Analysis' icon on your desktop.



## Additional Software

### **Crystal Reports**

The Risk Register functionality within Primavera Risk Analysis can be used in conjunction with Crystal Reports to run and create custom risk register reports.

In order to use this functionality, users will have to use the 'Export to Database' option from within Primavera Risk Analysis' Risk Register and then run the .rpt files from the Crystal Reports client.

### **Microsoft Office**

Primavera Risk Analysis supports versions 2003 and 2007 of Microsoft Office and Microsoft Project.